

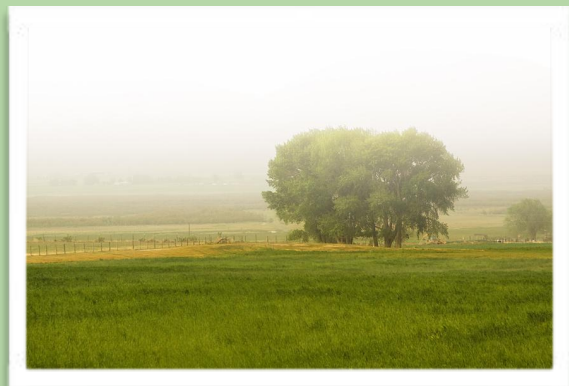
# Intimacy from the Inside Out Basic Couples Course

St. Louis, MO

Two 5-day training blocks:  
January 18-22 & March 22-26  
2018

---

This is a 72-hour intensive training program based on Internal Family Systems therapy that teaches IFS therapists to deepen their knowledge and skill for facilitating relational work with couples and individuals.



*Intimacy from the Inside Out  
is a level two offering from  
The Center for Self Leadership*



**Cathy Curtis, LCSW**  
Lead Trainer - Week 1



**Toni Herbine-Blank,  
MS, RN**  
Lead Trainer - Week 2



**Ann Drouilhet, LICSW, LMFT**  
Assistant Trainer - Week 1 & 2

**Register online at  
www.toniherbineblank.com  
Click on *Trainings***

**To confirm your spot, fill out the  
online application and pay the  
\$300.00  
nonrefundable deposit**

**For more information contact  
Kristi Good at  
intimacyinsideout@gmail.com  
or Toni at  
toni@toniherbineblank.com**

**For questions regarding lodging and  
transportation, or for special requests  
(per ADA), contact Jory Agate at  
joryagate@gmail.com**

**Instructional Methodology:**  
Lecture, demonstration,  
audio/visual, experiential practice  
of techniques, large and small  
group discussion.

**Skill Level:** This training is  
appropriate for mental health  
professionals of all skill levels.

**Location:** Hilton St. Louis  
Frontenac  
1335 S. Lindbergh Blvd  
Frontenac, MO  
314-993-1100  
(discounted room rates available)

**Schedule:** Jan. 18-22, 2018 &  
Mar. 22-26, 2018

Thurs - Sun. 9am - 6pm  
Monday 9am - 5pm

**Tuition:** \$2650  
(does not include room & board)

**Continuing education contact  
hours offered:** 72.00 hours

**Paying for the training**  
**\$300 due upon registration**  
**\$1175 due by July 18, 2017**  
**\$1175 due by Nov. 18, 2017**

**Cancellation Policy**  
**Deposit is nonrefundable. Full  
tuition refund available before  
July 18th and half tuition refund  
available before November 18th.**

**Continuing education credit for this  
training is co-sponsored by Toni  
Herbine-blank, MS, RN, CS-P, and *The  
Institute for Continuing Education.*  
Continuing education credit is offered as  
listed below. The training offers a total of  
72.00 contact hours (36.00 hrs. per  
session), with full attendance required.  
The CE processing fee is \$60 per person.  
Application forms will be available on site.  
CE verification is mailed to attendees  
following completion of each session of the  
training. To receive CE credit, attendees  
must complete CE materials, sign-in/out  
daily, and complete an evaluation of the  
training. If you have questions regarding  
continuing education, the program,  
grievance issues, or for a listing of learning  
objectives for sessions, contact *The  
Institute* at 251-990-5030 or at  
instconted@aol.com.**

**Psychology:** The Institute for Continuing  
Education is by the American Psychological  
Association (APA) to sponsor continuing  
education for psychologists. The Institute for  
Continuing Education maintains responsibility for  
this program and its content.

**Counseling/MFT:** For counselors seeking  
credit, The Institute for Continuing Education will  
submit a co-sponsorship application to NBCC for  
this program.

**Social Work:** The Institute for Continuing  
Education, Provider 1007, is approved as a  
provider for social work continuing education by  
the Association of Social Work Boards (ASWB),  
[www.aswb.org](http://www.aswb.org), through the Approved Continuing  
Education (ACE) program. The Institute for  
Continuing Education maintains responsibility for  
the program. ASWB Approval Period: 04-13-2015  
- 04-13-2018. Social workers should contact their  
regulatory board to determine course approval.

**California Professionals:** The California  
Board Behavioral Sciences accepts programs  
sponsored by approved continuing education  
providers of: APA, NBCC, ASWB.